



SOUTH NATION  
CONSERVATION  
DE LA NATION SUD

# WANTED

Have you seen these turtles?



## Northern Map Turtle

*Graptemys geographica*



Medium-sized turtle (up to 28 cm, 11") with fine yellow lines on an olive green to brownish shell. The shell is broad with a scalloped rear edge. Yellow stripes on head, legs, and tail. Often found basking on logs and rocks in rivers and lakes.

## Spotted Turtle

*Clemmys guttata*



Small turtle (up to 13 cm, 5") with a smooth black shell covered with yellow to orange spots. Spots also on top of head and on legs. Often associated with bogs and fens.

## Spiny Softshell Turtle

*Apalone spinifera*



Large turtle (up to 54 cm, 21") with a flat appearance and olive-grey to brown shell and body colour. Has a very long neck and an elongated snout. Often found in or near large lakes and rivers.

## Blanding's Turtle

*Emydoidea blandingii*



Medium-sized turtle (up to 27 cm, 11") with a distinctive yellow chin and throat. The shell is black to greyish-brown, sometimes with light yellow speckling, and is high-domed (up to 10 cm, 4") like a helmet. Found in ponds, rivers, lakes, marshes, swamps, and often seen crossing roadways.

## Eastern Musk Turtle

*Sternotherus odoratus* A.K.A. Stinkpot



Small turtle (up to 13 cm, 5") with a smooth, high-domed and often ridged, olive to black shell. The head is decorated with two yellow stripes. Often found in shallow lakes, rivers and marshes.

## Snapping Turtle

*Chelydra serpentina*



Large turtle (up to 45 cm, 18"), light brown to black shell, large head, triangular scales on upper part of a long tail. Found in a variety of wetlands and often seen crossing roadways.

Scan here to report your turtle sighting!

Or contact us at:

38 Victoria Street, Finch, ON K0C 1K0 info@nation.on.ca 1-877-984-2948  
www.nation.on.ca





SOUTH NATION  
CONSERVATION  
DE LA NATION SUD

# WANTED

## Have you seen these turtles?



### Rare Turtle Study

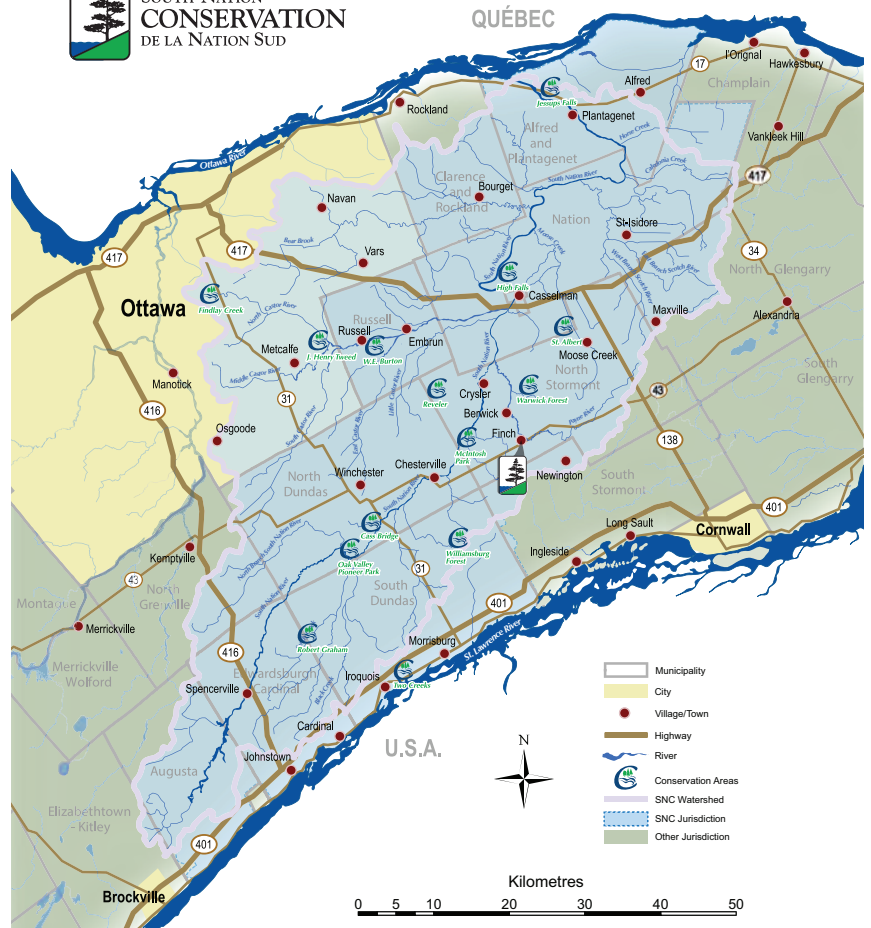
For over 8 years, South Nation Conservation (SNC) has been conducting a survey of rare turtles to determine their presence and location in the SNC jurisdiction. Since 2006, over 5,000 individuals and local organizations have shown interest in our project. Many of them, local residents just like you, have supported our study by reporting rare turtle observations to us at events, by phone, email, and more! Public sightings are an important component of our study and help us identify and prioritize roadway hotspots and opportunities for habitat enhancement. With your help and with support from local municipalities, partners and volunteers we have installed 'turtle crossing' road signs (alerting motorists to potential of turtles on the road) and worked to enhance critical nesting sites across our jurisdiction.

Turtles are good indicators of a healthy and ecologically stable watershed, whether you see a turtle alive or dead (even road kills), please contact us or scan the QR code on this poster to fill out your observation report today!

If you would like more information about rare turtles, want to inquire about helping turtles you have observed on your property, or to learn how to become involved in our project, please do not hesitate to contact us. Thank you for your continued support in helping us help rare turtles, we look forward to talking turtles with you soon!



SOUTH NATION  
CONSERVATION  
DE LA NATION SUD



Note: The Painted turtle depicted below is commonly seen and often mistaken for turtles we are studying. **The Painted Turtle is NOT part of our study!**



**Painted Turtle**  
*Chrysemys picta* spp.

Medium-sized turtle (up to 15 cm, 6"), yellow to orange-red stripes on head and legs. Orange-red pattern on edge of shell. Often found in ponds and marshes.

In partnership with:



Assistance for this project was provided by the Government of Ontario