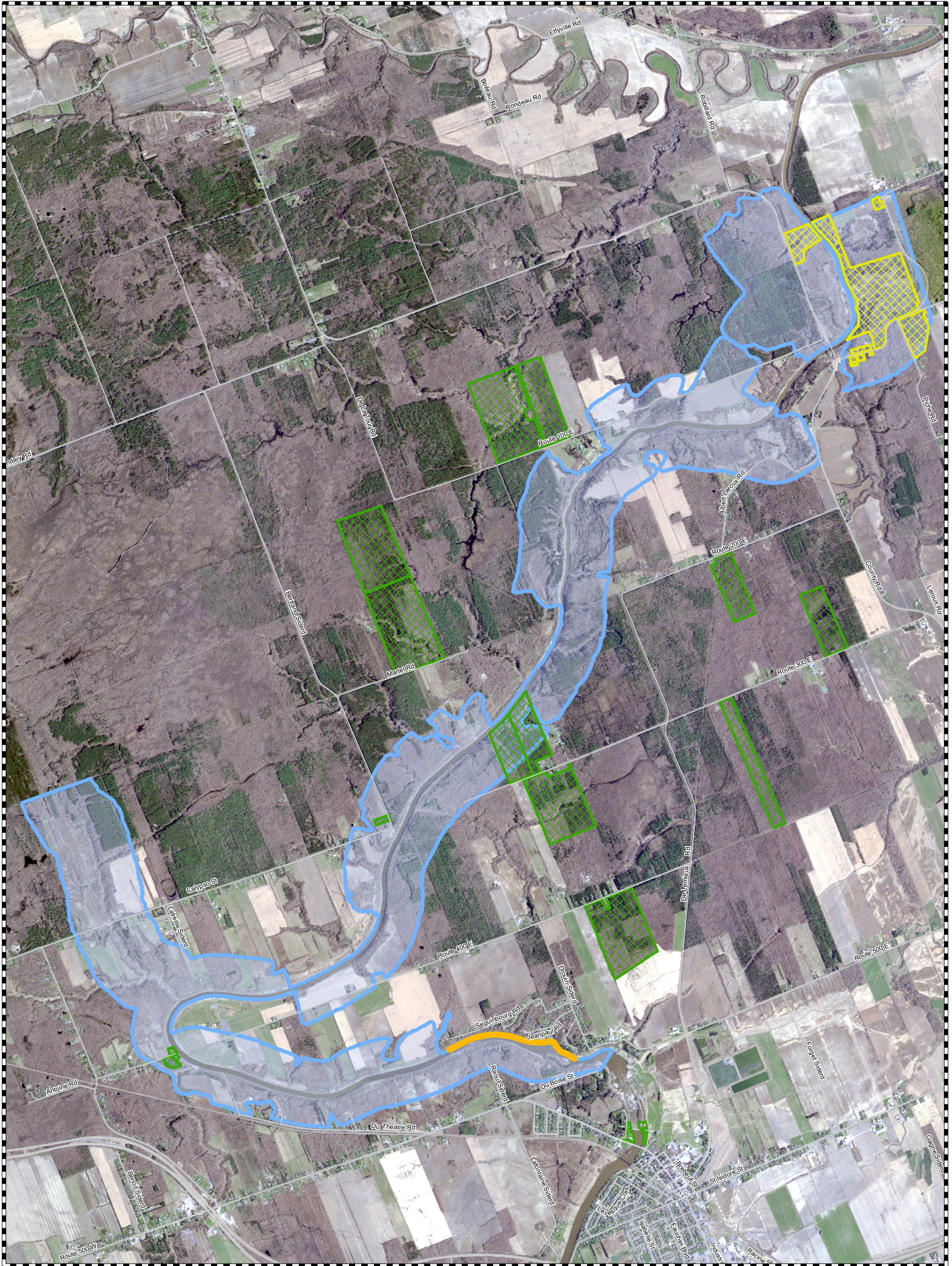


Casselman to Lemieux Potential Retrogressive Landslide Area



- Road
- Seguinbourg Berm
- Potential Retrogressive Landslide Area
- South Nation Conservation Property – Lemieux Acquisition 1989
- South Nation Conservation Properties

This map and the associated information displayed thereon are to be used for general illustrative purposes only, and is not suitable or intended for navigation, legal, engineering or surveying purposes. Although best efforts have been made to create accuracy, due to the complex and extensive nature of the data, all representations and/or information provided herein are approximate and users should consult the primary data and information sources to confirm the accuracy of the map. The Municipality and the South Nation Conservation Authority, their employees and agents, do not guarantee the accuracy of the map, and will not be liable for any claims for damages or loss arising from its use. The user hereby accepts and assumes all inherent risks associated with the use of this map. This map is produced in part with data provided by the Ontario Geographic Data Exchange under Licence with the Ontario Ministry of Natural Resources and the Queen's Printer for Ontario, 2014