

Stream Watch Program recruits citizen scientists

The Stream Watch Program is a volunteer based program that encourages residents to be active in a variety of environmental projects. The Castor River Sub-watershed was the 2014 focus.

Volunteers assisted with: stream assessments; tree planting; wildlife habitat enhancements; shoreline enhancements; stream garbage clean-ups; and invasive species removals.

Four streams were assessed in the City of Ottawa, Russell, and Embrun.

Through the Stream Watch Program, 152 volunteers participated in over 10 environmental projects.

Every little bit of help counts in improving the condition and health of our waterways. Contact us to learn about volunteer opportunities.



Financial Summary 2014

Budget:	\$5,959,054
Revenue:	\$2,347,456 (39.39%) – User fees, contracts, special government funding, fundraising
	\$2,837,012 (47.61%) – Municipal Levy
	\$598,177 (10.04%) – Special Projects for Municipalities
	\$176,409 (2.96%) – MNR annual grant

Please contact our office at the address below to request a full copy of the 2014 Audited Financial Statements.

2014 Great river catch

We actively monitor fish in our rivers, as part of our science-based monitoring programs. Fish are important indicators of overall watershed health. A rare occurrence, an American Eel was caught in the South Nation River during hoop netting near Lemieux. American Eels were once very abundant but have since declined due to habitat loss and migration barriers. They are listed as Endangered in the Province of Ontario. Contact us to report an eel sighting.



2014 Board of Directors

- Chair Bill Smirle, Stormont Dundas Glengarry
- Vice Chair Doug Thompson, City of Ottawa
- Past Chair Lawrence Levere, Leeds-Grenville
- Stephen Blais, City of Ottawa
- Michael Brown, City of Ottawa
- Steven Byvelds, Stormont Dundas Glengarry
- Barclay Cormack, Leeds-Grenville
- Jean-Yves Lalonde, Prescott-Russell
- Claude Levac, Prescott-Russell
- Glenn Mackey, Leeds-Grenville
- Tammy McRae, Stormont Dundas Glengarry
- Alan Perks, City of Ottawa
- François St. Amour, Prescott-Russell

Standing Committees

SNC works with four committees that provide program direction:

- Clean Water Committee
- Communications Committee
- Forestry Committee
- Fish and Wildlife Committee

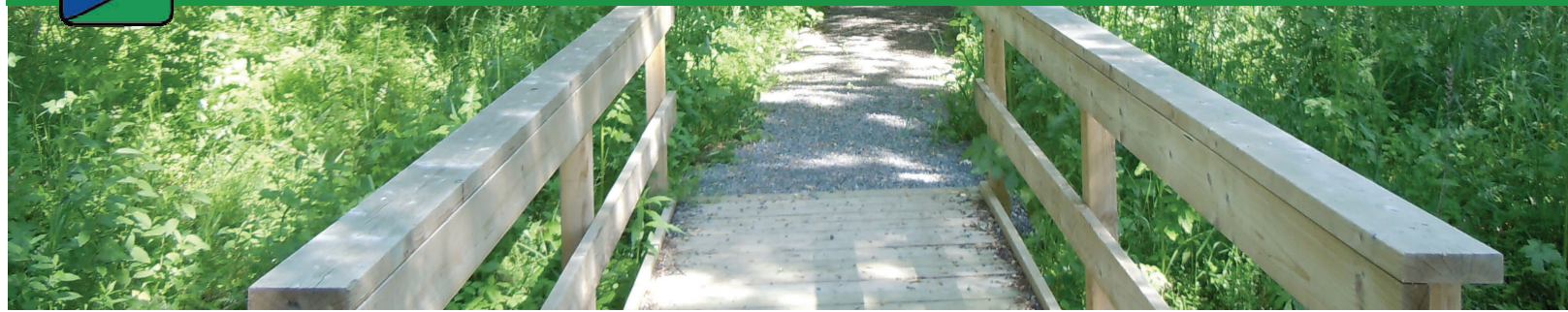
Members are residents, farmers, community groups, industry, and government. For information on memberships and activities, please contact info@nation.on.ca

Follow us on Twitter and Facebook!



**SOUTH NATION
CONSERVATION
DE LA NATION SUD**

2014 ANNUAL REPORT



SNC parks enjoyed by thousands of visitors

SNC owns and manages 154 properties, some 11,400 acres of land in Eastern Ontario, across a 4,382 square-km jurisdiction. Our 15 day-use parks make up a network of spectacular places that offer year-round recreational opportunities for the enjoyment of residents and visitors.

Activities on SNC lands:

- Hiking, cross-country skiing, and snowshoeing
- Hunting
- Trapping
- Bird watching
- Bee keeping
- Sugar bush operations
- Logging operations
- Agricultural cropping
- Horseback riding
- Snowmobiling
- Geocaching

Since 2013, staff have been collecting park data, on a weekly basis, from May to November. Park data is collected from both car and trail counters as part of our Park Use Program.

Understanding the number of park visitors, allows us to better coordinate improvements to park facilities and build public support. Results from 2014 indicate a growing use of park facilities, with high visitor use throughout the spring and summer months, and well into the early fall season. Scheduled park improvements for 2015 include: upgrades to signage; tree planting; new docks; and privies to accommodate increasing visitor numbers.



Parks Use Program Visitor Numbers May to November 2014

Car counters

High Falls CA (Casselman) – 13,688 visitors
Jessups Falls CA (Plantagenet) – 5,870 visitors
Two Creeks CA (Morrisburg) – 2,715 visitors

Trail counters

Two Creeks CA (Morrisburg) – 1,776 visitors
J. Henry Tweed CA (Russell) – 7,159 visitors
Findlay Creek Boardwalk (Ottawa) – 17,734 visitors

Land Trust: Preserve your legacy

In 2014, SNC acquired 468.6 acres of properties through its Land Acquisition Program. Property owners chose to donate their land for conservation purposes and view SNC as a natural partner in conservation. The Reveler Conservation Area officially opened in July 2014 and was generously donated by the Reveler family, who honored the legacy launched by Ray Reveler who originally bought the property in 1972. Located in North Stormont, the 99 acres of diverse habitat is a destination for hiking and bird watching enthusiasts and reflects much of Stormont County's rich history. SNC is proud to work with the Reveler family to secure Mr. Reveler's legacy and will manage the property for natural heritage features and to enhance the habitat for grassland birds.





New trail in Moose Creek showcases community partnerships

The Moose Creek Recreational Trail, a project six years in the making, showcases the importance of community partnerships.

Working with the Moose Creek Community Watershed Committee, it was through a generous offer from Mrs. Viola McRae, that the current trail location was established. The trail was generously funded by Lafleche Environmental Inc.

The trail, which is almost 1 kilometer in length, offers great hiking, walking, and birdwatching opportunities. The trail runs through a mixed forest, dominated by soft maples, hemlock, cedars, and yellow birch. The trail was named after Mrs. McRae's husband, Menzies, who regularly walked the area.

With support from the Township of North Stormont and SNC, a dedicated group of Moose Creek residents will manage the trail located at 16810 8th Road to Simeon Lane, Moose Creek.

Over the years, Lafleche Environmental Inc. has funded several projects including fish habitat, recreational trail, and tree planting.



Ontario Power Generation three- year partnership to expand wildlife habitat

In 2014, on the ground initiatives began as part of a three year partnership between SNC and Ontario Power Generation (OPG) through their Regional Biodiversity Funding Program. This partnership expands current programs and restores and enhances habitat for plants and animals in woodlands, grasslands, and wetlands.

Our Woodlot Advisory Service has expanded across the jurisdiction, increasing the number of site visits and services to residents. Through OPG's support, 160 acres of grassland habitat will be restored, creating habitat for species such as the Eastern Meadowlark and the Bobolink, as well as pollinators. Two wetland restorations will enhance

habitat for fish, waterfowl, reptiles, amphibians, and other ecosystem services, such as Wild Rice.

Community outreach and education are important components of the partnership. Curriculum-linked lessons about woodlands, grasslands, and wetlands are available to connect youth to the habitats found in their backyard. This past year, we worked with volunteers to sow Wild Rice and install Wood Duck boxes to make wetlands more welcoming and to increase cultural values and food sources for wildlife. If you are passionate about the environment, consider volunteering with us!



Ideal fish habitat provided at Port of Johnstown

As part of the environmental assessment for the \$38 million Port expansion project, staff work with many project partners including: St. Lawrence Parks Commission, First Nations, Federal and Municipal Governments, and Municipalities. The channel construction is now complete near Riverside Heights and provides ideal fish habitat and habitat for species of concern. Following an extensive planning and design phase, the project is almost complete. Following the construction, staff will continue to monitor the site.

Working with Municipalities to protect drinking water for the future

Within the Raisin-South Nation Source Protection Region, the Raisin Region Conservation Authority and SNC are assisting Municipalities to implement the Raisin-South Nation Source Protection Plan, under the Clean Water Act, 2006. The Plan keeps contaminants out of municipal drinking water systems including surface water intakes and ground water wells.

Following years of hard work by municipal and community partners, the Ministry of the Environment and Climate Change (MOECC) approved the Raisin-South Nation Source Protection Plan in October 2014; the Source Protection policies take effect April 1, 2015.

As a result of our experience protecting water resources at the local level, 18 Municipalities have given SNC \$1.5 million to deliver risk management plans to ensure that Municipalities are prepared for the implementation date.

Education and outreach is an important policy tool under the Plan to help keep drinking water safe.

Our series of revamped educational brochures offer best management practices to businesses and landowners on everything from septic systems to chemical storage, and are highly requested by our partner organizations. Additional educational and outreach materials are planned for 2015.

New Safe Septic Program

The Safe Septic Program saves property owners time and money by protecting groundwater and preventing costly repairs. The program offers free site visits and helps pay for pumping and minor repairs.

Twelve Municipalities have asked SNC to conduct sewage system inspections under the Ontario Building Code Act. Over the past 16 years, through the Sewage System Inspection Program, our qualified staff have reviewed 7,300 septic permits and conducted over 32,300 inspections.

Science based monitoring for on the ground stewardship

SNC has decades of practical experience protecting the environment and leading successful on the ground stewardship projects.

- Conduct habitat enhancement projects and stream restorations
- Monitor daily water levels for flood forecasting and drought programs
- Produce floodplain mapping and Watershed Report Cards
- Monitor water quantity and quality
- Track invasive species occurrences
- Improve fisheries and fish habitat
- Distribute thousands of dollars in grants for clean water projects
- Plant 121,750 trees and visit 39 woodlot owners through the Woodlot Advisory Service

Our municipal partners call on us for assistance in providing the following environmental services:

- Plant trees for Roadside Tree Programs
- Manage County Forests for public benefit
- Assess 7150 trees for St. Lawrence Parks Commission
- Complete scientific groundwater studies
- Encourage sustainable development through the review of hundreds of planning applications
- Inspect 1,400 sewage systems and review 300 severance applications
- Work with 150 developers and property owners to protect people, property, and the environment

Full Township of Alfred and Plantagenet joins SNC jurisdiction

At the request of the Township of Alfred and Plantagenet, SNC has expanded its jurisdiction to 4,382 square-km to include the entire Township. Residents now benefit from the environmental programs that we offer such as, tree planting, fisheries protection, and water quality improvement projects. Fifteen member municipalities oversee our programs and expenditures through the Board of Directors.

While it is an uncommon occurrence for a Conservation Authority to expand its jurisdiction past its watershed boundaries, SNC has expanded its jurisdiction three times since 2004. A positive vote from the municipality and a joint resolution from the Board and municipal representatives are required to enlarge a Conservation Authority's jurisdiction.

